



# RADIUS<sup>HT</sup>

Ryko Solutions

The Radius<sup>HT</sup> is Ryko Solutions' reliable, easy-to-use touch free vehicle wash system. It is specifically designed to be low maintenance and operable with reduced water use, giving our customers higher profit margins. Now, with the addition of side ultrasonics and a smoother arm rotation, this fast and powerful equipment not only produces consistent, high quality cleaning it also provides increased speed for higher throughput, translating into increased revenue opportunities for you.

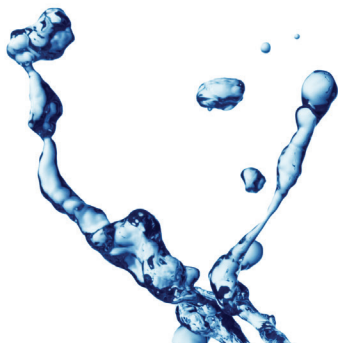


## Radius<sup>HT</sup>

What distinguishes the Radius<sup>HT</sup> in the marketplace is its powerful advanced flow concepts, maximized superior spray pattern designs and high-speed wash passes to achieve the highest standards in vehicle wash quality. The product offers an extensive top wash, including a soak wash, tri-color foam, wax and spot free rise, faster than any other touch free system on the market. The Radius<sup>HT</sup> combines superior cleaning technology with unsurpassed reliability, numerous revenue enhancing options and high-performance chemical delivery, making it the best touch free choice for customer satisfaction and revenue generation.

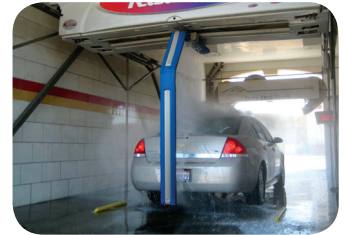
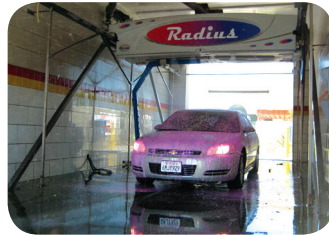
## Features

- IMAXX or High Pressure Cleaning Technology
- Open Bay – Extra Large Vehicle Friendly
- Ultrasonic Vehicle Positioning
- Halo Rinse
- Performance Chemical Delivery
- Frost Protection Ready
- Reverse Osmosis Ready
- Tape Drive
- Stainless Steel Frame
- Side Ultrasonics
- Smooth Arm Rotation



# RADIUS<sup>HT</sup>

Ryko Solutions



## Popular Options and Accessories

Drying Accessories  
 Rust Inhibitor  
 Unique Bay Options  
 Back Lighting  
 Smart Arm  
 Oscillating Wheel and Rocker Panel Blaster  
 Fixed Undercar  
 Fixed Undercar with Fixed Wheel and Rocker Panel Blaster  
 Instructional Signs  
 Jumbo Lighted Sign  
 Aqua Saver  
 High Pressure  
 Connectivity and Diagnosis  
 1 or 2 Step Presoak  
 Surface Sealant, TriFoam and Clear Coat Applications  
 Wax Conditioner and Spot Free Rinse Applications

## Specifications

Building Requirements	Minimum		Recommended	
	Standard	Metric	Standard	Metric
Bay Length 25' (7.6 m) track	27'	8.2 m	30'	9.1 m
Bay Length 27' (8.3 m) track	29'	8.8 m	32'	9.7 m
Bay Width	14'	4.3 m	15' 6"	4.7 m
Bay Height 84" (213 cm)	11' 2"	3.4 m	12' 6"	3.8 m
Bay Height 90" (229 cm)	11' 8"	3.6 m	12' 6"	3.8 m

## Electrical Requirements

### Minimum

Basic  
 208/230V 3 Phase, 60 HZ 100 AMPS  
 Plus 120V 1 Phase, 20 AMPS or  
 380/415V, 3 Phase, 50 HZ, 45 AMPS

Recommended Water Supply  
 Air Requirements

25 GPM – Reclaim with Tri-Foam  
 3/8" ID line – 100 PSI – 9 SCFM flow

120 PSI at 9 SCFM flow

